



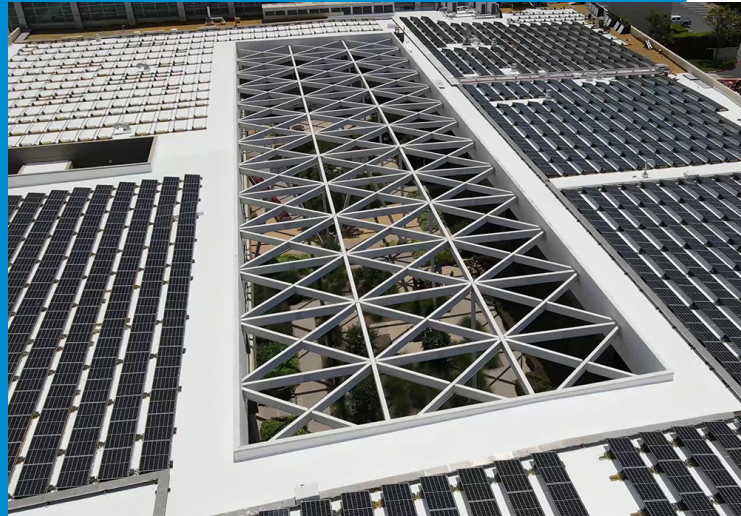
## SPRAY POLYURETHANE FOAM ELASTOMERIC COATINGS



## Roofing Made Simpler

**New Installation & Recover Foam Roof Systems  
Offering Weatherproofing & Energy-Saving Solutions**

# PROJECTS



Irvine Complex - Over 200,000 Feet of Ultra-Guard 5700 Silicone Topcoat



Auvil Fruit Company - Ultra-Thane 230 Spray Polyurethane Foam System Over Cold Storage



Encinitas, CA Properties - Ultra-Flex 1000 Acrylic Coating for Roof Restoration

# ULTRA-THANE ROOF SYSTEM

GCMC Ultra-Thane Roof Systems are designed to provide the rigorous waterproofing, energy efficiency, and weathering protection demanded by architects, contractors, and building owners.

Ultra-Thane 230 Roof Systems are monolithic, lightweight, and renewable with superior long lasting leak-free performance. These coated spray polyurethane foam systems offer proven UV protection, foot traffic resistance and hail impact durability under acrylic, silicone or urethane roof coatings. Ultra-Thane Roof Systems protect valuable building contents from leaks using its seamless, uniform membrane, which adds slope and sheds rainwater. GCMC Roof Systems are self-flashing and are easily field applied over any irregular surface, so they keep the elements from entering your structure through joints, penetrations, walls, and platforms.

Ultra-Thane Roof Systems are proven solutions for lowering your energy costs, reducing your installation time, controlling your drainage runoff and increasing the life span of your roof. GCMC Ultra-Thane Roof Systems are Underwriters Laboratory approved and I.C.C. certified with Energy Star rated coating performance.



## ROOFING FOAM

Ultra-Thane 230 is a closed-cell, spray polyurethane foam roofing designed as insulation and weatherproofing system for low slope, pitched, and barrel configured roofs. GCMC roof foams can be installed directly to the deck and over numerous roof substrates (Metal, BUR, Plywood, Concrete, and Dens-Deck). GCMC Spray Polyurethane Foam allows contractors to restore or re-roof existing buildings to achieve a warrantable, waterproof system at economical cost without unnecessary tear-offs.

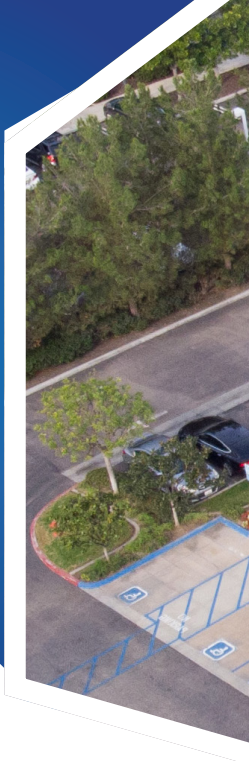
Our roof foams are manufactured in either low GWP HFO or traditional HFC-245fa technology with best-in-class R-Value performance. Ultra-Thane 230 spray foam with appropriate roof coatings may be installed as a monolithic barrier against water, air, and moisture vapor intrusion over commercial, industrial, institutional, cold storage, and residential roofs.

SPRAY FOAM*	
Ultra-Thane 230-2.5	2.5 lb Density, Closed Cell, Roofing Spray Foam
Ultra-Thane 230-2.7	2.7 lb Density, Closed Cell, Roofing Spray Foam
Ultra-Thane 230-3.0	3.0 lb Density, Closed Cell, Roofing Spray Foam

\*Ultra-Thane 230 is available in HFC and HFO Formulas



**WATERPROOFING.  
ENERGY EFFICIENT.  
DURABLE.**



## **ELASTOMERIC COATINGS**

GCMC topcoats for Spray Polyurethane Foam (SPF) include multi-purpose, single component, water-borne acrylic and silicone elastomeric coatings. Each is easy to apply and has been formulated and tested to provide excellent adhesion. Our acrylic and silicone coatings provide outstanding heat and UV resistance with exceptional flexibility and impact protection.

GCMC polyurethanes and polyureas are multi-purpose, fast-setting, high solids, aliphatic or aromatic protective elastomeric membranes that have excellent adhesion to Spray Polyurethane Foam (SPF) and other properly prepared construction surfaces.

### **ACRYLIC COATINGS**

<b>Ultra-Flex 1000</b>	General Purpose Elastomeric Acrylic
<b>Ultra-Flex 1000QS</b>	Quick-Set Elastomeric Acrylic
<b>Ultra-Flex 1000HT</b>	High Tensile Strength Elastomeric Acrylic

- Outstanding UV Resistance
- California 24 title compliant

### **SILICONE COATINGS**

<b>Ultra-Guard 5500</b>	Standard Solids Roof Coating (over SPF)
<b>Ultra-Guard 5700</b>	High Solids Roof Coating (over SPF)

- Waterproof
- High Reflectivity
- Cures Fast

### **POLYURETHANE & POLYUREA COATINGS**

<b>GC Ultra-Shield 3000</b>	2k, High Solids, Aliphatic Polyurethane Topcoat
<b>Ultra-Tuff 2500</b>	2k, 100% Solids, Fast-Set, Aromatic Polyurethane
<b>Ultra-Tuff 2800</b>	2k, 100% Solids, Fast-Set, Aromatic Hybrid Polyurea

- Durable and Flexible
- Strong Adhesion
- Highly Reflective and UV Stable





## PRIMERS

GCMC primers are one and two component products formulated to provide maximum substrate adhesion and short-term protection from the elements with excellent bonding to our spray foams, acrylics, silicones, polyurethane, and polyurea coatings. Primer application methods include using conventional and airless spray equipment, brush, or roller.

PRIMERS		BUR	CONCRETE	PLYWOOD	METAL	STEEL	FERROUS & NOT FERROUS METALS
<b>GC Ultra-Bond 10</b>	Waterborne, Acrylic Emulsion Primer	•	•	•	•	—	—
<b>GC Ultra-Bond 13</b>	Yellow Waterborne Epoxy primer	•	•	•	—	—	—
<b>GC Ultra-Bond 16</b>	Clear, Waterborne Acrylic Primer	•	•	•	—	—	—
<b>GC Ultra-Bond 55</b>	High Solids, Modified Alkyd Primer	—	—	—	•	•	—
<b>GC Ultra-Bond 80</b>	Low VOC (100 g/L) Epoxy-Polyamide Primer	—	•	•	•	•	•



## ABOUT GCMC

Our SPF and coatings are manufactured in ISO 9001:2015-compliant facilities totaling over 500,000 square feet. To improve efficiency and increase production capacity, these facilities are regularly upgrade with the latest manufacturing technologies.

Ultra-Thane SPF undergoes rigorous testing in adherence to code compliant standards which are evaluated and monitored by Intertek and Underwriters Laboratory. These product approvals ensure quality and durability so, our Ultra-Thane systems can hold up to your most demanding roof requirements. Our roof coatings products are compliant with Title 24 Building Energy Efficiency Standards and provide excellent solar reflectance.

## GET IN TOUCH

1220 E. NORTH AVE  
FRESNO, CA 93725

**TELEPHONE:** (855) 495-4004  
**FAX:** (559) 495-4009

**EMAIL:** [SUPPORT@GENERALCOATINGS.NET](mailto:SUPPORT@GENERALCOATINGS.NET)  
**WEBSITE:** [WWW.GENERALCOATINGS.NET](http://WWW.GENERALCOATINGS.NET)



**OUR  
WEBSITE**